

ORMC  
Intermediate/Advanced Chess Training  
Spring 2022  
Robert Shlyakhtenko

Instructions:

For practice on today's topic, we will have two sets of eight positions each.

For both sets:

- Pay attention to whether it is white to move or black to move.
- Don't send a solution after each problem. Try to send solutions a few problems at a time.
- Feel free to ask questions in the chat.

For Set A:

- This set introduces the tactics of Deflection and Attraction.
- For this set, sending a 1-2 move variation is usually enough.

After about 16 minutes, I will discuss the problems in Set A.

For Set B:

- The problems in Set B have similar themes to the ones in Set A, but are slightly more difficult.
- Try to find the best move or sequence of moves in the position. For this set, typing a 2-3 move variation is usually enough.

If you finish both sets early, let me know and I will give you a challenge problem.

Good luck!

□ Deflection

■ A1

White to Move

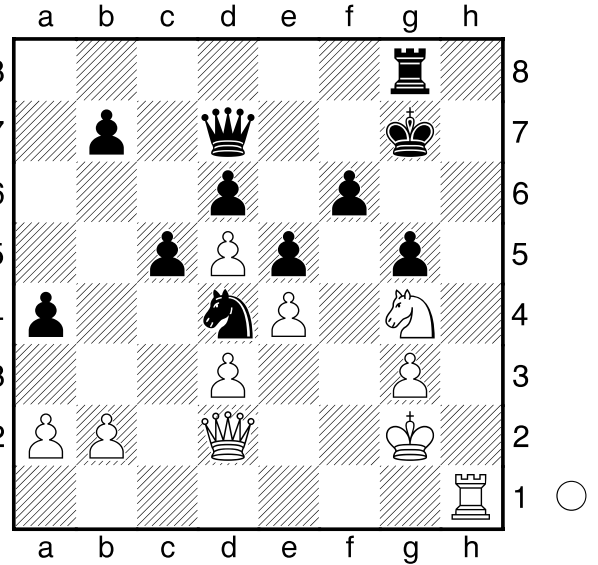
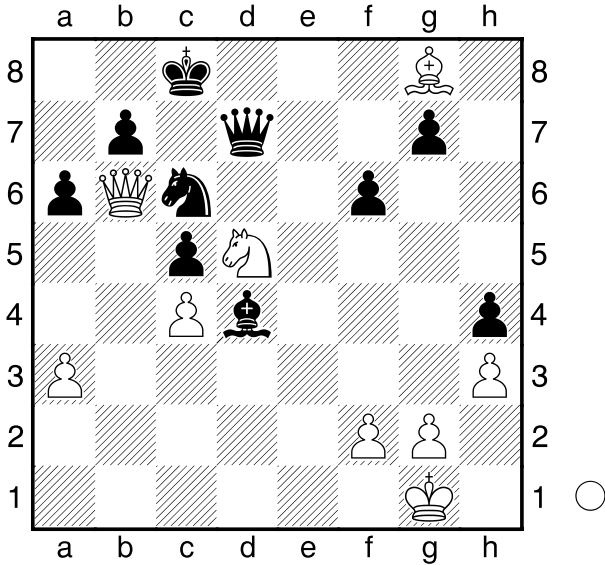
26.01.2022

□ Attraction

■ A3

White to Move

11.02.2022



□ Deflection

■ A2

White to Move

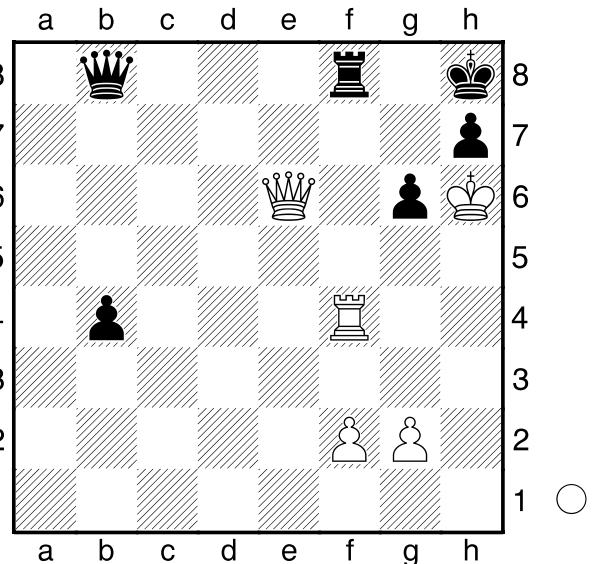
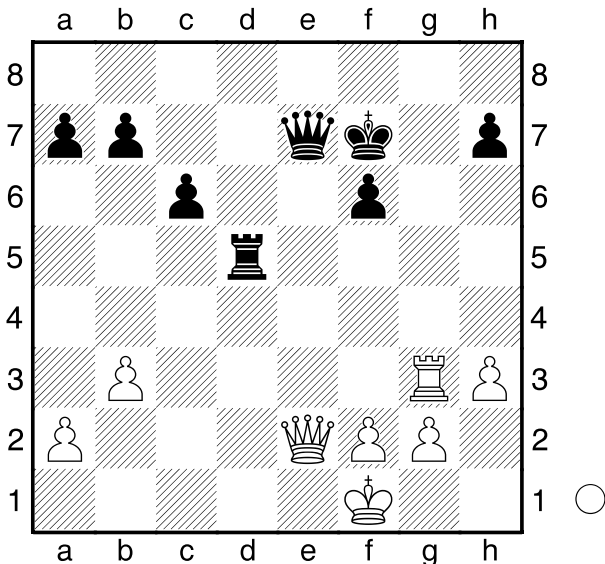
26.01.2022

□ Deflection

■ A4

White to Move

11.02.2022



□ Deflection

■ A5

White to Move

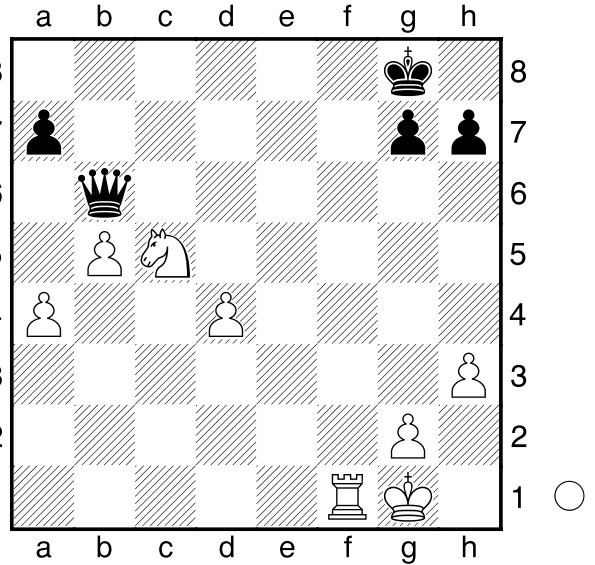
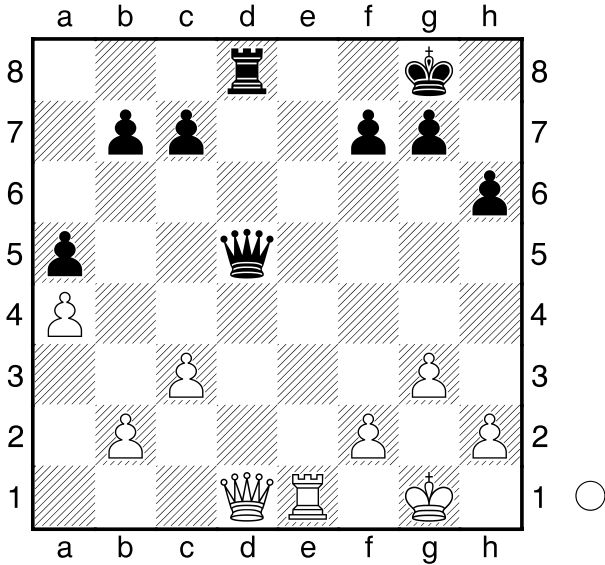
11.02.2022

□ Attraction

■ A7

White to Move

11.02.2022



□ Deflection

■ A6

White to Move

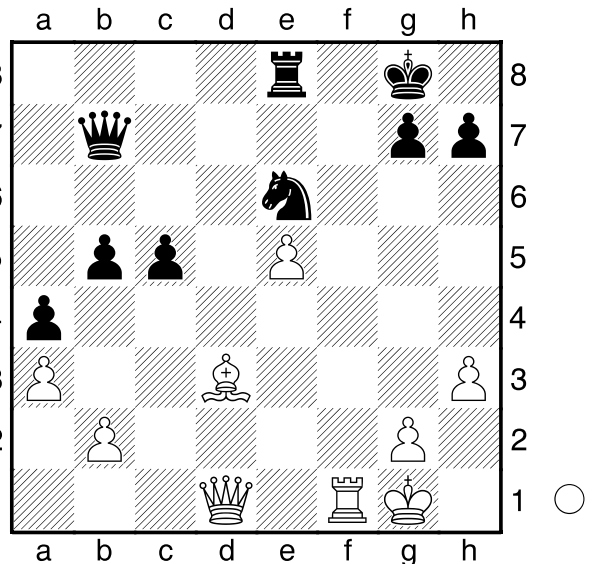
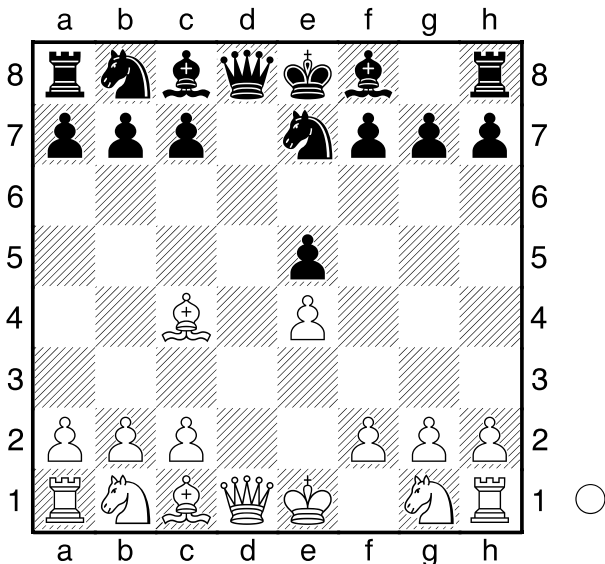
11.02.2022

□ Attraction

■ A8

White to Move

11.02.2022

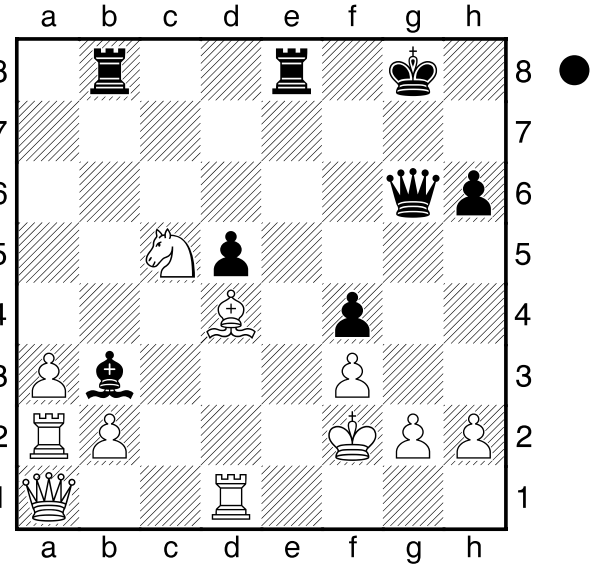
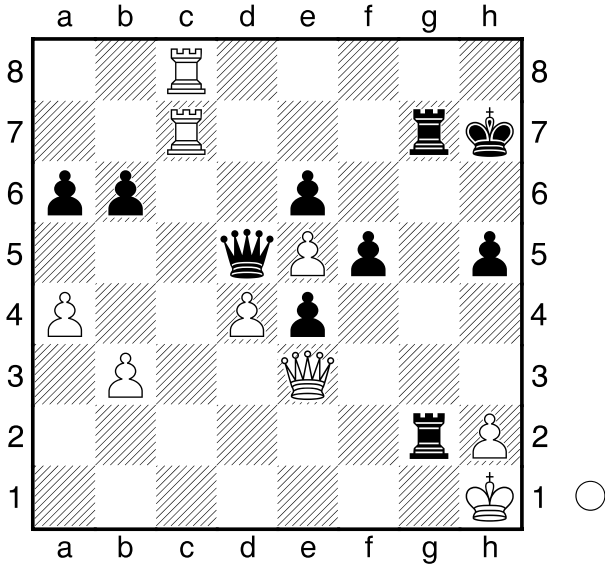


□ Attraction  
■ B1  
White to Move

11.02.2022

□ Deflection  
■ B3  
Black to Move

11.02.2022

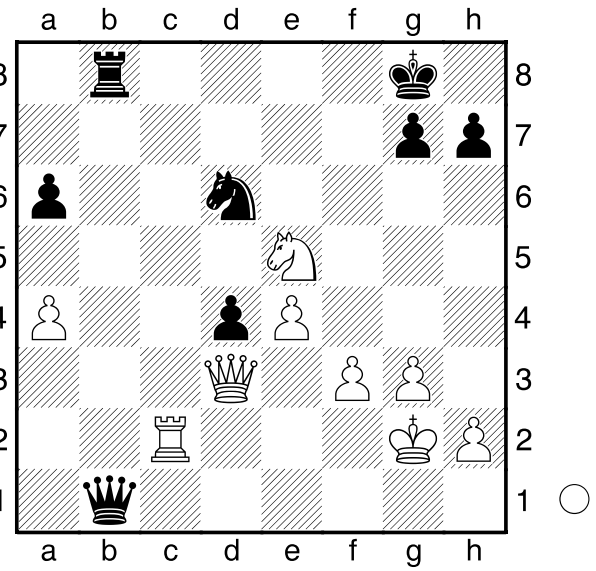
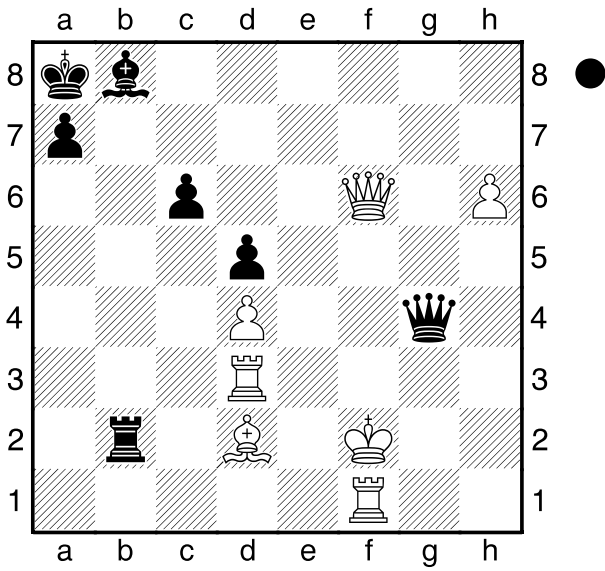


□ Deflection  
■ B2  
Black to Move

11.02.2022

□ Deflection  
■ B4  
White to Move

11.02.2022

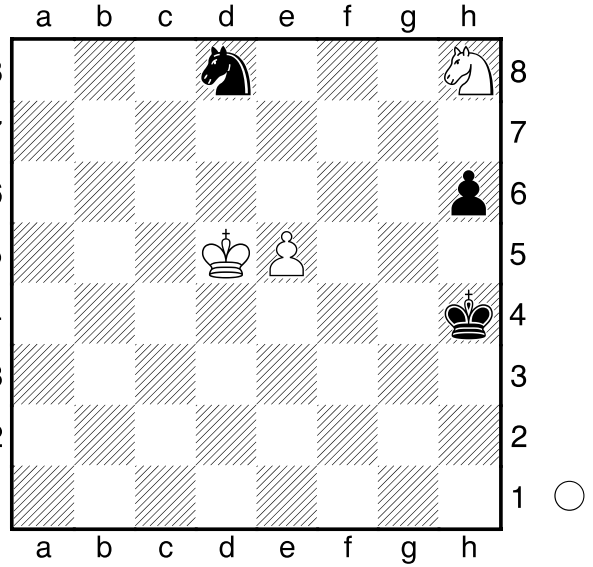
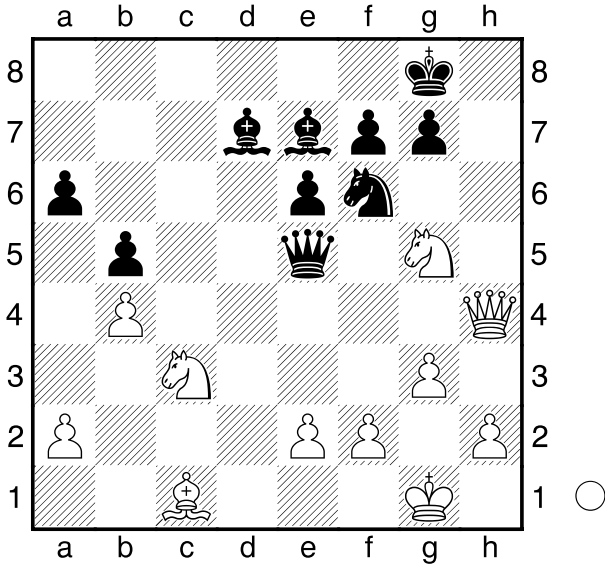


□ Attraction  
 ■ B5  
 White to Move

11.02.2022

□ Deflection  
 ■ B7  
 White to Move

15.05.2020



□ Deflection  
 ■ B6  
 White to Move

11.02.2022

□ Deflection  
 ■ B8  
 White to Move

15.05.2020

