

LAMC Final Quiz
Group 1
Part A

Name: _____

Good luck!

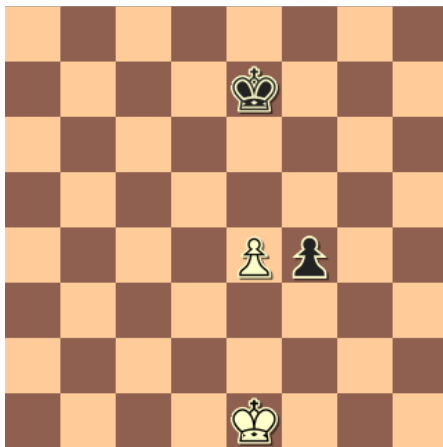
Part A: Concepts & Terminology

1. Fill in the chess piece values and notation in the table below. Some of the answers have already been filled in.

Piece	Value (fill in)	Notation
King	Infinity	K
Queen		
Rook		
Bishop		
Knight		
Pawn		(none)

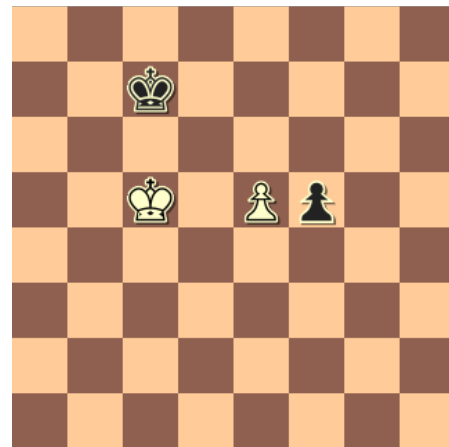
2. In which of the following positions is *en passant* legal? See next page as well. Please circle the correct answer.

A



Black's last move was f5-f4

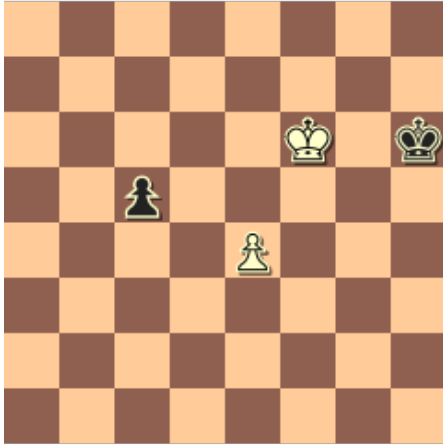
B



Black's last move was f7-f5

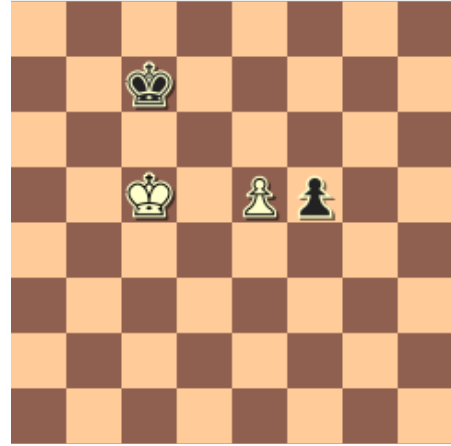
2

C



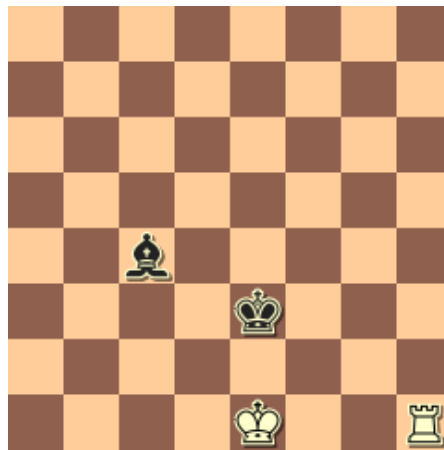
Black's last move was c7-c5

D

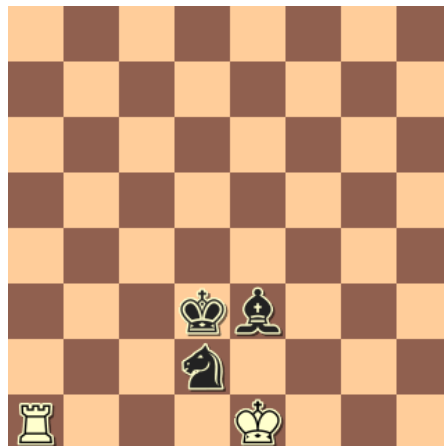


Black's last move was f6-f5

3. Can white castle in the following position? (Write "Yes" or "No." Explain your answer.)



4. What about this position? Can white castle?



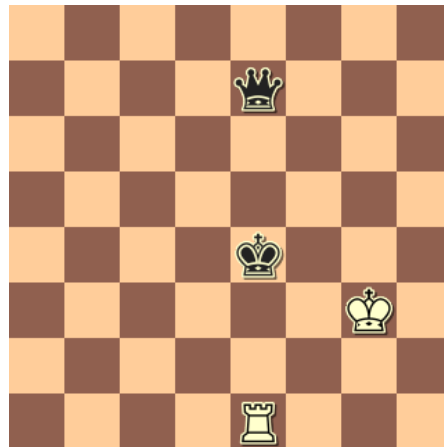
5. The method of boxing in the opponent's king when checkmating with a queen or rook is known as:

- a) The Pin
- b) The Mailman Method
- c) The Box Method
- d) Stalemate

6. Attacking two or more enemy pieces at once is known as:

- a) The Fork
- b) The Pin
- c) The Skewer
- d) Being Greedy

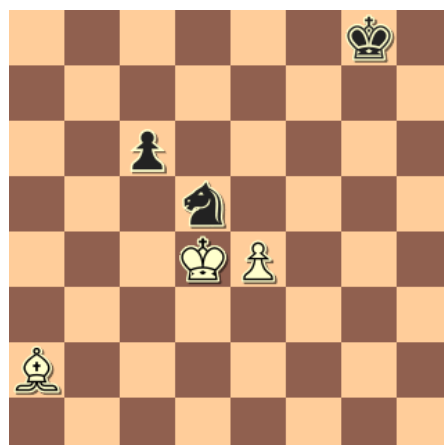
7. Consider the position below. Which type of tactic is white using?



- a) The Fork
- b) The Pin
- c) The Skewer
- d) None of the above

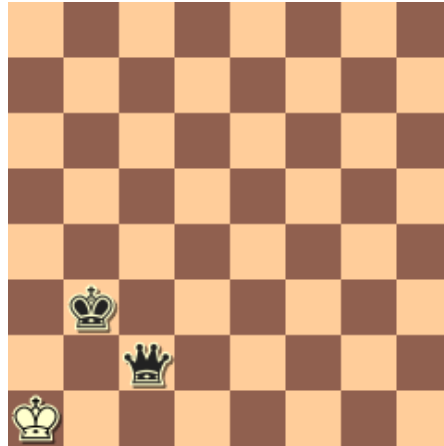
8.

Which type of tactic is white using below? (see next page for answer choices)



- a) Relative Pin
- b) Absolute Pin
- c) The Skewer
- d) The Fork

9. Consider the position below (white's turn).



This position is:

- a) Stalemate
- b) Checkmate
- c) None of the above

10. Which if the following is *not* a type of pin?

- a) Absolute Pin
- b) Imaginary Pin
- c) Relative Pin

11. Name 3 opening principles:

1: _____

2: _____

3: _____

This is the end of Part A. Please raise your hand and submit your test.